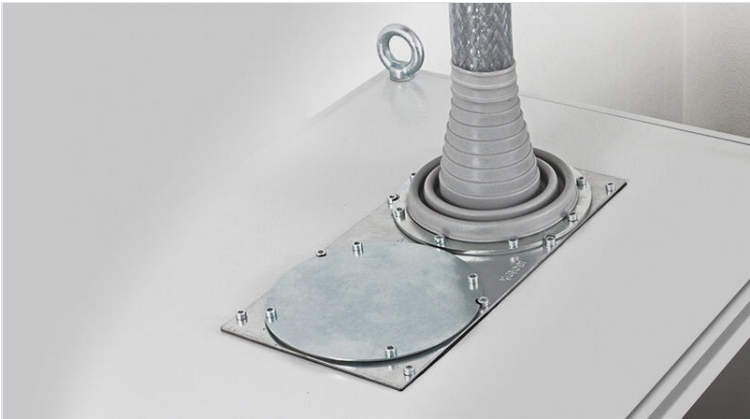


KEL-ULTRA flex pyramid cable entry grommets

for single cables with diameters up to 115 mm / IP66 / UL Type 12



The KEL-ULTRA flex is designed as a cable entry grommet for any large cable or conduit that is difficult to manage. The KEL-ULTRA flex comes in two sizes and is ideal for routing and sealing cables and conduits with a diameter from 25 to 115 mm. Due to the high flexibility of the elastomer pyramid, inserting large, thick cables with KEL-ULTRA flex is easier than using standard cable glands.

After inserting the cable or conduit, the KEL-ULTRA flex is quickly and easily mounted with the metal ring and screws. This ring enables a circular fixing and sealing of the grommet at the enclosure wall. The ring is supplied with each KEL-ULTRA flex.

It is recommended that additional strain relief be provided for cables using cable ties.

Cutting of grommets: Cable diameter less 25%. The corresponding diameters are marked on the grommet.

IP54



RoHS compliant

IP55



REACH COMPLIANCE

IP64



Made in Germany

IP65



IP66



UL TYPE 12



Specifications

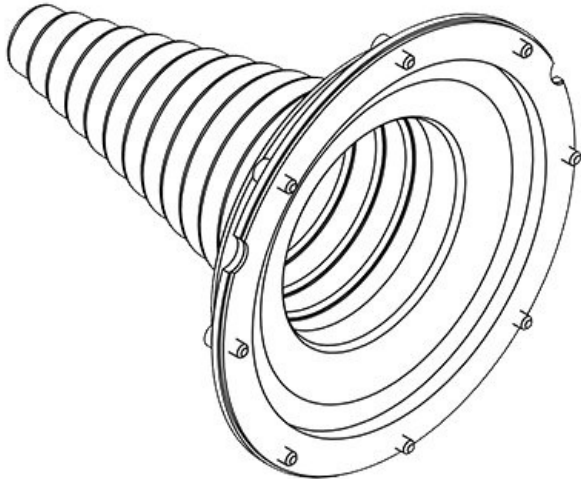
IP rating (EN 60529)	IP54, IP55, IP64, IP65, IP66
UL Type (UL 50E)	UL Type 12
Material	Elastomer Fixing ring: Stainless steel
Flame class	UL94-V0, self-extinguishing
Operating temperature	-40 C° to 100 C°
Properties	silicone free, halogen free
Mounting options	Screw type mounting

Advantages & Benefits

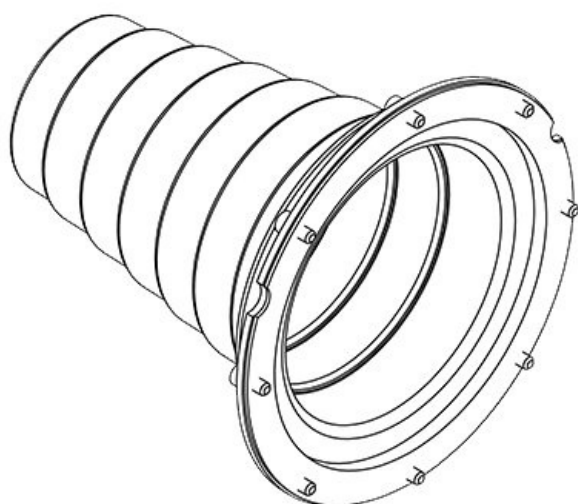
- It is possible to install rigid cables at angles
- Certified protection IP66 (acc. to EN 60529)

Product Types & Sizes

KEL-ULTRA flex 1



Part No.	42630	External diameter	168 mm
EAN	4251269309	Cut-out size, round	140 mm
Package quantity	1	No. of screw holes	8
For max. no. of cables	1	Diam. of screw holes	5,5 mm
Max. cable diameter	90 mm	Clamping range	25 - 90 mm
Height	175,5 mm	Clamping range	1 x 25 - 90 mm
Mounting height	175,5 mm		



Part No.	42631	External diameter	168 mm
EAN	4251269309069	Cut-out size, round	140 mm
Package quantity	1	No. of screw holes	8
For max. no. of cables	1	Diam. of screw holes	5,5 mm
Max. cable diameter	115 mm	Clamping range	75 - 115 mm
Height	175,5 mm	Clamping range	1 x 75 - 115 mm
Mounting height	175,5 mm		